

GREEN SLEEVES®

Adjustable Tree Staking Systems



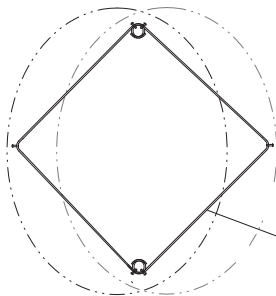
The Revolutionary Tree Staking System

designed by Landscape Maintenance Contractors

Featuring our 4-Stake System using one of each of our product types

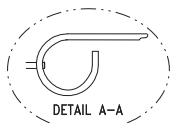
Ask about our 2- and 3-Stake Systems

4-Stake Cross Brace



4 STAKE CROSS BRACE

TWO SIZES - 2 EACH REQUIRED
15 GALLON - 24" BOX
36" - 48" BOX

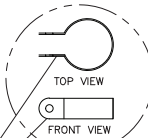


MODEL 100 - 2.00" ID
MODEL 150 - 2.30" ID
MODEL 300 - 2.95" ID

CORDED RUBBER TREE TIE

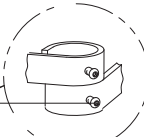


TL (Thin Line) Sleeve and Flex Tie



SLEEVE SIZES:

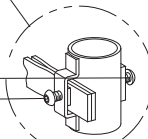
• MODEL 100 - 1.98" ID
• MODEL 150 - 2.40" ID
• MODEL 300 - 3.00" ID



CROSS BRACE SCROLL SIZE

• MODEL 100 - 2.00" ID
• MODEL 150 - 2.30" ID
• MODEL 300 - 2.95" ID

CS (Carbon Steel) Sleeve and Corded Rubber Tie



1/4"-20 STAINLESS STEEL HEX HEAD SCREW

GREEN SLEEVES® FOUR STAKE SYSTEM

ISOMETRIC VIEW SCALE: NTS

Installation Instructions

- Place Cross Brace on ground and use as Template for where to place the stakes. Mark, then remove cross brace and install stakes.
- Braces and Sleeves slide over tree stakes in chosen order.
- Position Sleeves. Tighten Hex Screw.
- Open Hook & Loop Tie.
- Place Tie around tree trunk and re-connect to Hook & Loop.
- Do not over-tighten. Allow for trunk movement.
- Adjust as needed over months of growth.
- Remove System within 24 months.
- Re-use System for another tree!
- No nails
- Simple installation
- Made in USA
- Member SF Made
- Certified San Francisco LBE

NOTE: Our GS (Carbon Steel) Sleeve and Corded Tie is recommended for sites with high wind, potential vandalism, and for minor righting of trees: see <http://www.jamesurban.net/trees/> and <https://hort.ifas.ufl.edu/woody/pruning.shtml>

The Greensleeves System is a Reusable Tool!

- Use for 2", 3" round, 1 1/2" x 1 1/2" wooden stake—Model 100S, 1 1/2" schedule 40 galvanized pipe—Model 100.
- Adjustable Cross Brace for 15 Gal., 24", 36", 48" Box trees ensures the stakes are placed outside of rootball
- Easy vertical and horizontal adjustment of Sleeves and Ties
- Tie length is customized to each Cross Brace for 15 Gal., 24", 36", 48" Box

415.863.8588 robert@greensleeves.com 1206 18th St., San Francisco, CA 94107

Please visit our website to see our complete line of products, and to see and download our architectural drawings and written specs.

www.greensleeves.com